

DRAWING NO.  
SD022390

| CATALOG NUMBER | FIG. NO. | COPPER CONDUCTOR |                                   | B    | L<br>± .04 | O.D.<br>± .01 | COLOR CODE | WIRE STRIP LENGTH | NO. OF SPACES PER END |
|----------------|----------|------------------|-----------------------------------|------|------------|---------------|------------|-------------------|-----------------------|
|                |          | NAVY             | COM'L CABLE                       |      |            |               |            |                   |                       |
| YS8CL          | 1        | 23 (.171)        | AN-8 STR. (.167)<br>6 SOL. (.162) | .44  | 1.00       | .27           | RED        | .50               | 1                     |
| YS6CL          | 1        | -----            | 6 STR. (.183)                     | .81  | 1.75       | .29           | BLUE       | .88               | 1                     |
| YS5CL          | 1        | 30 (.202)        | 5 STR. (.206)                     | .81  | 1.90       | .30           | BLUE       | .88               | 1                     |
| YS4CL          | 1        | 40 (.226)        | 4 STR. (.231)                     | .81  | 1.75       | .34           | GRAY       | .88               | 1                     |
| YS3CL          | 1        | 50 (.254)        | 3 STR. (.261)<br>2 SOL. (.257)    | .88  | 2.05       | .38           | WHITE      | .94               | 1                     |
| YS2CL          | 1        | 60 (.282)        | 2 STR. (.291)                     | .88  | 2.00       | .42           | BROWN      | .94               | 1                     |
| YS1CL          | 1        | 75 (.317)        | 1 STR. (.330)                     | .88  | 2.06       | .46           | GREEN      | .94               | 1                     |
| YS25L          | 1        | 100 (.363)       | 1/0 STR. (.373)                   | .88  | 2.08       | .51           | PINK       | .94               | 1                     |
| YS26L          | 1        | 125 (.407)       | 2/0 STR. (.418)                   | .94  | 2.17       | .56           | BLACK      | 1.00              | 1                     |
| YS27L          | 1        | 150 (.457)       | 3/0 STR. (.470)                   | 1.00 | 2.30       | .62           | ORANGE     | 1.06              | 1                     |
| YS28L          | 1        | 200 (.514)       | 4/0 STR. (.528)                   | 1.00 | 2.32       | .69           | PURPLE     | 1.06              | 1                     |
| YS29L          | 1        | 250 (.577)       | 250 kcmil (.575)                  | 1.06 | 2.46       | .75           | YELLOW     | 1.12              | 1                     |
| YS30L          | 2        | 300 (.628)       | 300 kcmil (.630)                  | 1.06 | 2.47       | .81           | WHITE      | 1.12              | 2                     |
| YS31L          | 2        | 350 (.681)       | 350 kcmil (.681)                  | 1.12 | 2.60       | .88           | RED        | 1.18              | 2                     |
| YS32L          | 2        | 400 (.742)       | 400 kcmil (.728)                  | 1.19 | 2.74       | .95           | BLUE       | 1.25              | 2                     |
| YS33L          | 2        | -----            | 450 kcmil (.772)                  | 1.19 | 2.76       | 1.01          | GRAY       | 1.25              | 2                     |
| YS34L          | 2        | -----            | 500 kcmil (.814)                  | 1.38 | 3.15       | 1.06          | BROWN      | 1.44              | 2                     |
| YS35L          | 2        | 500 (.832)       | 550 kcmil (.855)                  | 1.38 | 3.20       | 1.12          | YELLOW     | 1.44              | 2                     |
| YS36L          | 2        | -----            | 600 kcmil (.893)                  | 1.38 | 3.22       | 1.18          | GREEN      | 1.44              | 2                     |
| YS37L          | 2        | 650 (.936)       | 650 kcmil (.929)                  | 1.38 | 3.23       | 1.23          | ORANGE     | 1.44              | 1                     |
| YS38L          | 2        | -----            | 700 kcmil (.964)                  | 1.38 | 3.22       | 1.25          | PINK       | 1.44              | 1                     |
| YS39L          | 2        | -----            | 750 kcmil (.998)                  | 1.62 | 3.72       | 1.30          | BLACK      | 1.69              | 2                     |
| YS40L          | 2        | -----            | 800 kcmil (1.031)                 | 1.62 | 3.75       | 1.35          | ORANGE     | 1.69              | 1                     |
| YS41L          | 2        | 800 (1.051)      | 850 kcmil (1.062)                 | 1.62 | 3.76       | 1.38          | GOLD       | 1.69              | 1                     |
| YS44L          | 2        | -----            | 1000 kcmil (1.152)                | 1.88 | 4.28       | 1.49          | WHITE      | 1.94              | 1                     |
| YS45L          | 2        | -----            | 1250 kcmil (1.289)                | 2.00 | 4.60       | 1.69          | YELLOW     | 2.06              | 2                     |
| YS453L         | 2        | 1300 (1.325)     | 1300 kcmil (1.315)                | 2.00 | 4.60       | 1.74          | ORANGE     | 2.06              | 2                     |
| YS46L          | 2        | -----            | 1500 kcmil (1.412)                | 2.00 | 4.40       | 1.84          | GREEN      | 2.06              | 2                     |
| YS47L          | 2        | -----            | 1750 kcmil (1.527)                | 2.19 | 5.00       | 1.98          | GRAY       | 2.25              | 2                     |
| YS48L          | 2        | -----            | 2000 kcmil (1.631)                | 2.25 | 5.17       | 2.12          | BROWN      | 2.31              | 2                     |

| REV | DATE       | DESCRIPTION  | ECO   | BY | C'H'K. |
|-----|------------|--|-------|----|--------|
| J   | 08/10/2011 | ADD #2 & #4 SOL TO THE DRAWING. UPDATE TOOL AND DIE OPTIONS. | 22869 | DG | MA     |

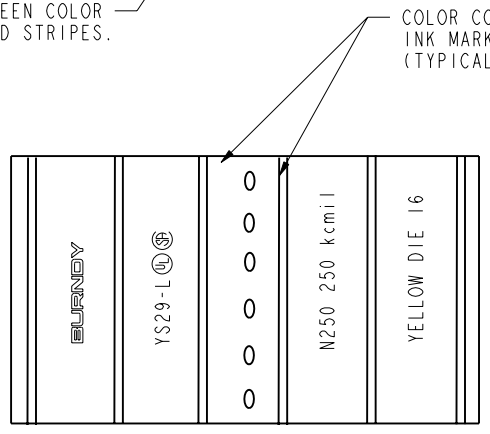
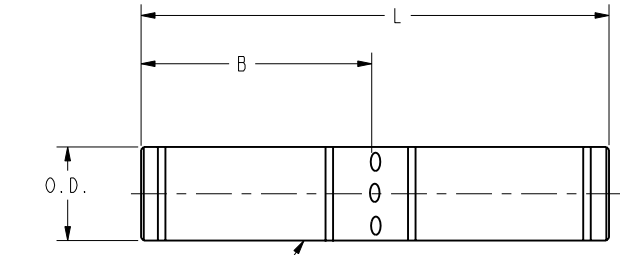


FIG. 1

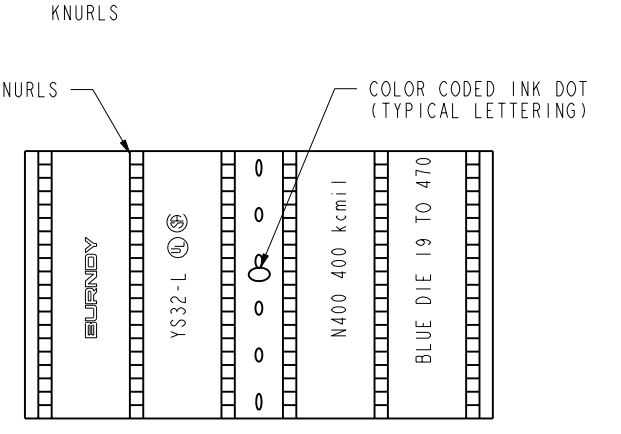
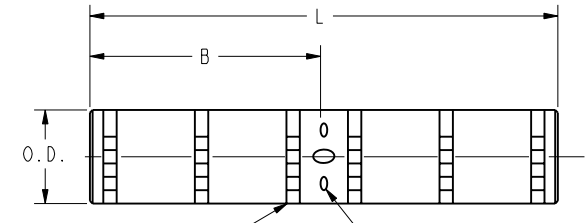


FIG. 2

- NOTES:
- FOR SILVER PLATING ON HYLINKS™ ADD SUFFIX LETTERS "LV" TO THE CATALOG NUMBER.
  - MATERIAL: COPPER TUBE.
  - FINISH: TIN PLATED.

|                      |                  |              |          |
|----------------------|------------------|--------------|----------|
| TO ORDER BURNDY® PRC | HYLINK™          |              |          |
|                      | ITEM NO:         | 502815       |          |
|                      | CAT. NO:         | YS-L (TABLE) |          |
|                      | DRAWN BY:        | C. RACCANO   | 10/11/76 |
|                      | CHECKER:         | C. A. R      | 10/12/76 |
| DSN APPVL:           | --               | --           |          |
| MFG APPVL:           | --               | --           |          |
| QA APPVL:            | --               | --           |          |
| MKT APPVL:           | --               | --           |          |
| PROJ FAM:            | CM&R COMPRESSION | DRAWING NO   | REV      |
| PROJECT #:           | --               | SD022390     | J        |
| DOCUMENT TYPE:       | Sales            | SHEET 1 OF 6 |          |
| REL LEVEL:           | Released         | SCALE: 1:1   |          |

REV: PE0200